



ECOLOGY SEMINAR



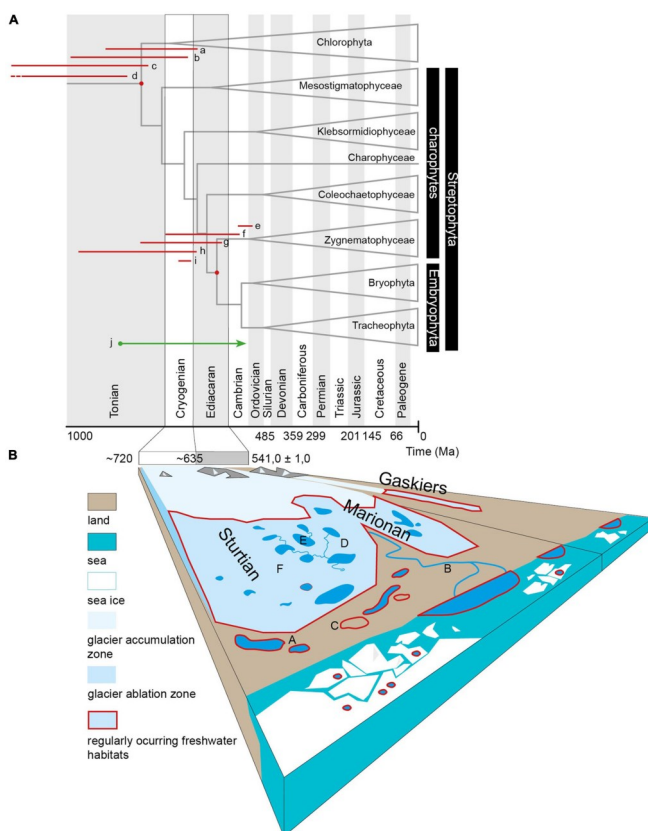
Tuesday, 29.12.2022

16.20h

Jakub Žárský

Charles University, Prague

The Cryogenian Cradle of Land Plants: The Role of Large Glaciations in Terrestrialization



The current development in phylogeny and the timing of the rise of land plants place the emergence of critical genetic features of terrestrial lifestyle into the Cryogenian era. Re-interpretation of the history of land plants intimately linked to large-scale glaciations also finds surprising support in recent ecological and ancient biogeochemical lines of evidence. It provides a neat answer to the puzzling question of why the closest living relatives of land plants underwent a reduction of the body plan and the loss of zoospores. The seminar will explain the core of the Cryogenian Cradle hypothesis and its implications for understanding this unique event in the history of the Earth.



Where: Lecture Hall B2, Building B, USB Campus